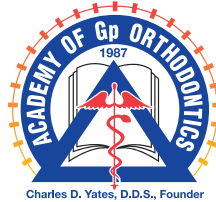
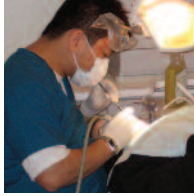


HANDS-ON EXPERIENCE

LEARN HOW TO INCORPORATE ORTHODONTICS INTO YOUR PRACTICE



ACADEMY OF Gp ORTHODONTICS Offering comprehensive orthodontic continuing education courses where you treat patients, not typodonts.

Our 12-session course meets one weekend every two months and consists of a Friday classroom instruction and a Saturday comprehensive clinical hands-on training with direct patient treatment. Your site host and instructor will provide all the patients, materials, and supplies for the clinical sessions. The lectures include identification and understanding of the various types of patient malocclusions and how they can be treated effectively utilizing the Differential Straight-Arch® Technique. **The knowledge gained through the Friday lecture/seminar format is reinforced by Saturday's clinical participation, allowing you the optimum learning experience.**

TECHNIQUE ADVANTAGES

The Differential Straight-Arch® Technique is a comprehensive, fixed orthodontic appliance that facilitates learning because it is divided into three stages of treatment. An article on the technique is included in this packet. The bracket has the following advantages:

- It reduces the need for functional appliances, head gear, or any distalizing mechanics.
- It reduces the need for orthognathic surgery.
- Anterior deep bites can be opened without the need for bite planes.
- Teeth can be easily moved without anchorage strain.
- Extraction cases can be treated much easier.

COURSE ADVANTAGES

- It provides clinical training with patients for a hands-on experience.
- Treat a case load of patients from bracketing to retention for a full clinical experience.
- Participants are encouraged to begin cases in their own practices during the course.
- There is ongoing support and case consultation, along with available staff training.
- You will have the same instructor for each session with monitoring privileges upon completion.
- It is an invaluable source of CDE hours at a reasonable cost.

AUSTIN, TEXAS COURSE 2012-2014

AUSTIN COURSE

WITH DR. JEFFERY GERHARDT

HANDS-ON COURSE DATES View the complete list of dates for this course on the SIGN ME UP registration form or on www.academygportho.com.

INSTRUCTOR/HOST FOR THE CLINICAL FACILITY

Cedar Park, Texas · Jeffery Gerhardt, D.D.S., P.C.

3415 A El Salido Pkwy · Cedar Park, TX 78613

Phone: 512.257.2483

ACCOMMODATIONS/LECTURE

Holiday Inn Express

12703 FM 620 North · Austin, TX 78750 USA

Reservations: 512.249.8166

(3 minutes east of Dr. Gerhardt's office)

YOUR INSTRUCTOR/HOST Jeffery Gerhardt, D.D.S., P.C. graduated from the University of Texas in Austin in 1988 with a degree in business management. In 1992, he graduated from Texas Health Science Center Dental Branch in San Antonio, Texas and began practicing in Victoria, Texas as an associate dentist. In 1996 he opened his general practice in Cedar Park, Texas, a suburb just north of Austin. Advanced Family Dentistry has three general dentists and a periodontist on staff. Dr. Gerhardt limits his practice primarily to orthodontics and is a member of the American Dental Association, the Academy of General Dentistry, and local dental societies.

As a member of the Academy, he completed the Twelve Session Comprehensive hands-on course in orthodontics in 1998 and has hosted the clinical facility providing patients for the Cedar Park, Texas hands-on course site since 2001.

YOUR CLINICAL CO-INSTRUCTOR Bert Vasut, D.D.S. graduated from the University of Texas in Austin in 1981 with a degree in Biology. In 1987, he graduated from the UT Health Science Center in San Antonio, with his DDS specializing in Pediatric Dentistry. In 1987 he opened a private practice of pediatric dentistry and orthodontics in Cedar Park, Texas.

Dr. Vasut received his hands-on orthodontic training under AGpO instructor, Dr. Ron Austin and has been a clinical instructor at the Cedar Park, Texas site since 2005. He is a member of the American Academy of Pediatric Dentistry, Texas Academy of Pediatric Dentistry, and the Academy of Gp Orthodontics.



ARMAMENTARIUM

Participants will be provided a course binder, technique guide, technique and diagnosis videos, lab exercise material, lecture and clinical handouts, clinical patients and clinical instruments and supplies. A dentist who does not hold a current Texas dental license will be paired with a licensed Texas dentist. Each participant will be required to bring some diagnostic materials; a list will be provided.

FEES AND CDE HOURS

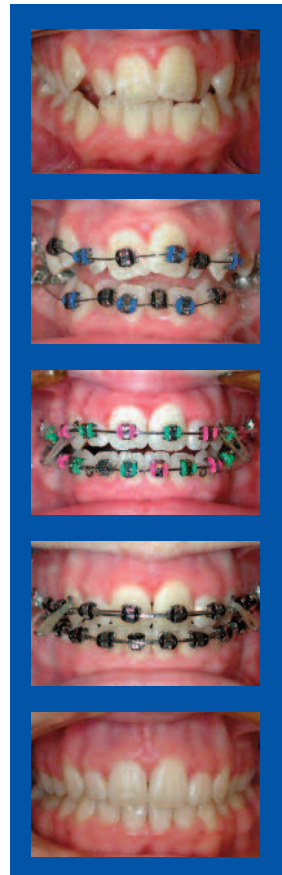
The tuition for the 12-session course (minimum of 145 CDE hours) is \$14,400 plus two years of Academy membership. The Introductory Orthodontic Session (7.5 CDE hours) is \$150 and has a twofold purpose. Use it as an *Introductory Session*, with a 5 day timeframe to register and confirm enrollment in the 12-session course. The Bonus weekend fee will be waived if the participant enrolls in the full course. Or, enroll in the 12-session course in advance and use it as *Session I* – a working weekend with lecture and clinical patients. A CDE hours verification record is given to participants upon completion of the course. Associate Fellowship status is awarded upon satisfactory completion of the course as outlined in the hands-on course syllabus.

MEMBERSHIP

Course tuition is based on a participant's membership in the Academy of Gp Orthodontics. The 2012-2014 membership dues of \$590 are due upon payment of the tuition. Membership includes a certificate, quarterly newsletter/journal, a reference CD with patient forms/ letters and marketing materials to help you incorporate orthodontics into your practice. In addition, the annual meeting registration fee is discounted 50% for the first- and second-year participant. The Academy networks and assists members in gaining additional knowledge in orthodontics through its annual, national convention and educational program. Members are encouraged to attend and bring cases from their practice for discussion. Membership allows your instructor mentoring service with free case problem solving consultation.

Wow! What an excellent training course! In a 35 year career in dentistry, this is by far the best maxi continuing education course I've taken — bar none. The complete training I've received has made, and is continuing to make a most dramatic impact in my practice. The mystery of orthodontics has disappeared having been replaced with a confidence to treat any orthodontic case!

– Charles E. Young, Jr., D.D.S. of Collierville, Tennessee



"Taking this hands-on orthodontic course was the best continuing education decision I have ever made! There are other classroom/typodont only courses out there, but there is NO substitute for learning comprehensive orthodontics on patients."

– J. Dale Smith, D.D.S. of Canton, Ohio

COURSE HIGHLIGHTS

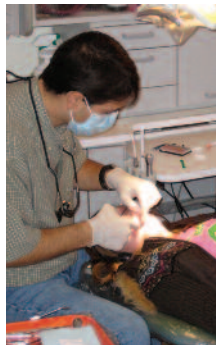
WHAT YOU NEED TO GET STARTED

A highly qualified team of instructors, clinical instructors, and hosts provide on-going support and invaluable **comprehensive clinical hands-on training with direct patient treatment** to ensure excellent case results. Courses are limited in number of participants in order to maintain an optimum, dynamic student-to-instructor learning experience in a clinical setting. By the third session, you are encouraged to start orthodontic cases in your own practice. Course tuition and expenses are easily recovered by beginning three to four cases in your own practice. You may bring patient records to the Friday sessions for case discussion and troubleshooting. Tuition also includes monitoring for one year upon completion of the course, with current AGpO membership.

COURSE FORMAT

This Comprehensive Clinical Orthodontic Course will meet one weekend every two months for a total of 12 sessions. In addition to treating patients, participants will develop a digital library by taking intra-oral photographs of hands-on patients and will give case presentations to the class during the Friday seminar session. There will also be time to go over case records brought from each participant's own practice. Along with diagnosis and technique, the Friday seminar will include:

- Etiology
- Growth and development
- Interceptive treatment
- Treatment planning
- Surgical orthodontics
- Palatal expansion
- Impactions
- Limited cases
- Compromised cases
- Facial esthetics
- Practice and risk management
- Space maintenance
- Tongue thrust
- Early treatment
- Air Rotor Stripping
- TMD
- Skeletal open bites
- Retention



COURSE OBJECTIVES

- To facilitate your professional growth by providing an environment in which you will learn by doing.
- To enable you to more comprehensively service those who come to you for dental care.
- To help you become knowledgeable and confident in using the Differential Straight-Arch Technique.

TREATMENT OBJECTIVES

- Diagnosis
- Treatment planning
- Active treatment
- Case finishing
- De-bracketing
- Retention



UPON COMPLETION

You will:

- have a knowledge and understanding of the Differential Straight-Arch Technique.
- be able to identify the classification of malocclusion the patient demonstrates.
- diagnose and develop a treatment plan for each case.
- have an understanding of the variables affecting treatment and treatment outcome.
- comprehensively follow the patient through treatment.
- gain a proficiency in treating orthodontic malocclusions seen in your practice.

SESSION OBJECTIVES

Bonus Weekend – This is an extra session and opportunity for all confirmed pre-enrolled course participants to attend a full day of lecture and full clinical participation with patient assignment and treatment.

“Introductory Orthodontic Session” – This first session also serves as an optional session for potential course participants giving them the opportunity to meet the course instructor, the clinical instructor, the host dentist and visit the course clinical facility. Course enrollment is based on “a first-come, first-served basis.” Potential enrollees have one week following the “Introductory Session” to enroll in the course. Enrollment is full tuition and 2 years membership payment. All course enrollments are contingent upon approval by the course instructor following the Introductory Session/Bonus Weekend.

This session will assist the participant in making an informed decision as to whether he/she will make the commitment to participate in the comprehensive 12-session hands-on program. This will also allow the instructor, the clinical instructor(s) and/or host dentist the opportunity to meet and interview potential course participants.

The Friday morning session will consist of a lecture of current ideas and trends in orthodontics and will allow the participant to view documented case presentations with a Question and Answer (Q & A) period regarding the course curriculum and the Differential Straight -Arch® Technique (Tip-Edge® System). The Saturday clinical session will continue with a clinical demonstration of initial banding and bracketing of patients with the Tip-Edge® System by the course instructor and patients will be assigned.

SESSION SCHEDULE

Friday — 9:00 a.m. to noon

- (Classroom) Lecture and Participation: Seminar/Lecture/ Diagnosis/Case Presentation/Typodont Exercises

1:00 p.m. to 4:30 p.m.

- Diagnosis/Case Presentations and Treatment Planning for Patients

4:30 p.m. to 7:00 p.m.

- Optional consultation session with instructor in diagnosis and treatment of patient records brought from each participant’s practice.

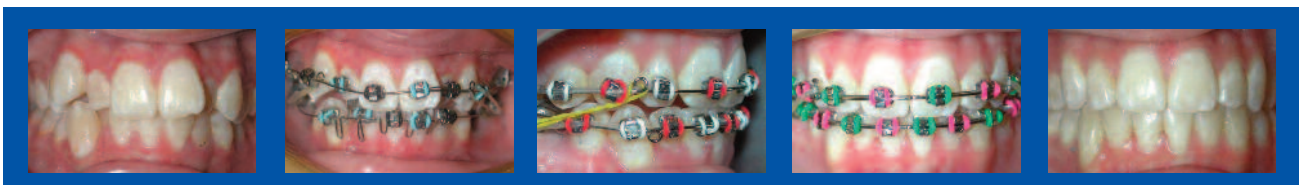
Saturday — 9:00 a.m. to 4:30 p.m.

- (Clinical) Participation: Hands-on Patient Treatment



“This course was the best step I’ve ever taken to ‘recession proof’ my practice. Many of my colleagues have complained about slow downs in their practice due to the economy. With ortho as part of my practice there is no seasonal slow down or economic down turn.”

– Gregory R. Cannizzo, D.D.S. of McHenry, Illinois



LEARN BY DOING

BECOME KNOWLEDGEABLE AND CONFIDENT IN ORTHODONTICS

INTRODUCTORY ORTHODONTIC SESSION

- What is the Academy of Gp Orthodontics?
- How the class is set up
- Overview of Tip-Edge® Technique (Stages I, II, and III)
- How being able to do comprehensive orthodontics can help your practice

SESSION I

Outline

- Introduction of class
- More in depth overview of Tip-Edge Technique (Stages I, II, and III)
- Stage I of orthodontic treatment
- How to put braces on

Objectives

- To demonstrate and explain the steps needed for the orthodontic workup
- To explain the Differential Straight-Arch Technique from the initial banding and bracketing of the orthodontic patient through slides, lecture, and typodont exercises. The Tip-Edge technique is divided into 3 stages (Stage I is to straighten front teeth, Stage II is to close any posterior space, and Stage III is to reach final tip and torque of teeth)
- To explain and demonstrate Stage I of the Differential Straight-Arch Technique to include the initial bracketing of clinical patients

SESSION II

Outline

- Stage I continued
- What to do on orthodontic recalls (maintenance visits in Stage I)
- Diagnosis overview
 - Patient analysis
 - Model analysis
- Patient consent

Objectives

- To recognize and identify the information needed to diagnose the orthodontic patient and their consent forms. Explain Stage I with lecture, slides and review of the Differential Straight-Arch Technique's Guide with diagnosis and clinical application of the technique as well.
- To demonstrate treatment diagnosis through a slide presentation and lecture
- To demonstrate through lecture and slide presentation the patient consult appointment.



SESSION III

Outline

- Diagnosis continued
 - Cephalometric analysis
 - Putting diagnosis all together
- Extraction site selection
- Pre-Stage II and III

Objectives

- To familiarize the dentist with an orthodontic cephalometric analysis
- How to choose the proper teeth to extract in an orthodontic extraction case
- How to transition from Stage I to Stage II or III

SESSION IV

Outline

- Stage I troubleshooting
- Patient financing
- Patient management
- Start Stage II – Closing posterior space

Objectives

- To discuss problems which can occur in Stage I and how to correct them
- Discuss potential financial options for orthodontic patients and how to file dental insurance for these procedures
- How the dentist closes posterior space in Stage II using E-links

SESSION V

Outline

- Stage II continued
 - Correcting midlines
 - Getting first molars into a Class I relationship

Objectives

- To learn more advanced techniques used in Stage II of treatment. Several ways to correct midlines will be discussed, as well as using available space to better correct overjets and dental molar class discrepancies.

SESSION VI

Outline

- Stage III

Objectives

- To thoroughly explain Stage III of treatment. Class will go over goals of Stage III and how to achieve them.



SESSION VII

Outline

- Stripping
 - Using diamond strips
 - Air Rotor Stripping (ARS)
- Taking braces off
- Retainers
 - Temporary retainers
 - Conventional removable retainers
 - Fixed retainers
 - Bioliners

Objectives

- Learn when stripping space is needed
- Introduce techniques for stripping space
- Dentist learns how to take braces off
- Dentist is introduced to different types of retainers and how to pick the correct retainer for their patient

SESSION VIII

Outline

- Functional appliances (Herbst, Jasper Jumper, Twin Force bite corrector)
- Molar distalization
- Root resorption

Objectives

- The dentist should fully understand when to use a functional appliance.
- Which functional appliance to use
- Understand how to distalize molars
- Discuss what causes root resorption and how to prevent it

SESSION IX

Outline

- Mixed Dentition
 - Analysis and treatment
 - Space loss
 - Space maintenance

Objectives

- Teach dentist how to recognize problems in a mixed dentition
- Review how to perform a thorough mixed dentition analysis
- Gain an understanding of what problems to treat in a mixed dentition
- Discuss serial extractions – why and when to use this technique
- Review problems associated with early space loss and how to prevent it

SESSION X

Outline

- Mixed dentition continued
 - Correct anterior crossbites
 - Correcting habits
 - Lip bumpers
- Etiology of Growth and Development; Airways and Habits
- De-impacting erupting molars

Objectives

- Dentist should learn when to correct an anterior crossbite in a mixed dentition
- Several techniques of correcting anterior crossbites will be presented. The dentist will learn which technique to use for which situation.
 - Oral habits such as thumb sucking and tongue thrusting will be discussed. Dentist will learn techniques to treat these conditions.
 - Dentist will gain an understanding of the idea behind a lip bumper. Class will learn when these appliances can be useful.

SESSION XI

Outline

- Cosmetic considerations
 - Ortho/veneers
 - Ortho/small laterals
 - Ortho/missing laterals
 - Ortho/chipped anteriors
- TMD – As it relates to orthodontics



Objectives

- Class will learn how to prepare for orthodontic/cosmetic restorative cases; topics will include braces/veneers, braces/implants.
- Class will also learn how to handle cosmetic challenges such as small lateral teeth, missing laterals, and chipped anterior teeth.
- TMD concerns with orthodontic treatment will be discussed

SESSION XII

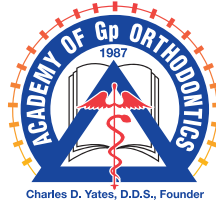
Outline

- Orthognathic Surgery
- Practice Management and Risk
- Bonus Topic/s based on class requests
- Final Exam

Objectives

- Class will review orthognathic techniques.
- Will discuss how to manage an orthodontic practice and decrease risk.

* The Differential Straight-Arch technique employs differential forces and mechanics and is separated into three main stages. Each stage has its own objectives which are explained in detail in the course text. This has proven helpful for those teaching, as well as learning, and in general facilitates treatment, and improves the quality of the results.



MISSION STATEMENT The Academy of Gp Orthodontics is a non-profit educational and professional organization which was founded by Dr. Charles Yates in 1987. Its membership is composed of dentists and specialists who provide quality orthodontic care for their patients. The organization's goal is to facilitate the sharing of knowledge and new technological developments in the field of orthodontics through comprehensive orthodontic experiences with direct patient care.

Academy of Gp Orthodontics

509 E. Boydston Ave.
Rockwall, TX 75087
Phone 800.634.2027
Fax 888.634.2028

www.academygportho.com

ADA CERP[®] | Continuing Education Recognition Program Academy of Gp Orthodontics is an ADA CERP Recognized Provider. ADA CERP is a service of the American Dental Association to assist dental professionals in identifying quality providers of continuing dental education. ADA CERP does not approve or endorse individual courses or instructors, nor does it imply acceptance of credit hours by boards of dentistry. Academy of Gp Orthodontics designates this activity for 145+ continuing education credits.



Approved PACE Program Provider FAGD/MAGD Credit
Approval does not imply acceptance by a state or provincial board of dentistry or AGD endorsement.
03/01/2010 to 02/28/2014

COURSE DATES

FOR THE AUSTIN, TX 12-SESSION COURSE (2012-2014)

HANDS-ON COURSE DATES

2012

July 7 – Introductory Session

Sept. 14, 15 – Session I

Nov. 9, 10 – Session II

2013

Jan. 11, 12 – Session III

March 8, 9 – Session IV

May 3, 4 – Session V

July 12, 13 – Session VI

Sept. 13, 14 – Session VII

Nov. 8, 9 – Session VIII

2014

Jan. 10, 11 – Session IX

March 7, 8 – Session X

May 9, 10 – Session XI

July 11, 12 – Session XII/Graduation



"I took this course with the intention of improving my esthetic cases, but after starting the course I soon realized how orthodontics was going to become a big portion of my practice. The lecture and hands-on training gave me the confidence after a few sessions to begin some cases. Now after completing the course, orthodontics has become a real enjoyment for me and my staff."

– Kurt Stodola, D.D.S. of Moose Lake, MN

SIGN ME UP

FOR THE AUSTIN, TX 12-SESSION COURSE (2012-2014)

Name _____ D.D.S./D.M.D.

E-mail _____

Address _____

City _____ State _____ Zip _____

Phone (_____) _____ Cell (_____) _____

Fax (_____) _____

EARLY BIRD \$500 DISCOUNT (check only if applies)

Yes, I'd like a **\$500 discount** and I agree to **enroll in the full course** prior to the Introductory Session.

Check all that apply

- Sign me up for the "Introductory Orthodontic Session" for \$150.00.
- Enroll me in the 12-Session Hands-on Course for \$14,400.00* plus two years of AGpO membership for \$590.00*.
- I am interested in learning more about the following topics: _____

Payment (Payments will not be processed until 1 month before the course starts)

- I have enclosed my check for \$ _____ .
- Please place my payment of \$ _____ on my credit card # _____
 - VISA MasterCard Discover American Express Exp. Date _____ Security Code _____
 - Name as it appears on card _____
 - Signature _____
 - Card billing address (if different from above) _____

- 12 Months No Interest Financing through the Academy

How did you hear about us?

- AGpO website
- AGpO member _____
- ad (publication) _____
- other _____

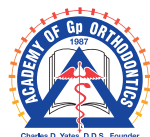
CANCELLATION POLICY (check to accept terms)

I understand that once my tuition is paid, I have three business days to cancel the course without penalty. No refunds will be made less than 21 days prior to the first session. The Academy reserves the right to delay or cancel this course with my option of a full refund.

ASTN1214

Academy of Gp Orthodontics | 509 E. Boydston Ave. | Rockwall, TX 75087 | Phone 800.634.2027 | Fax 888.634.2028

Register today! Mail, Fax (888) 634-2028 or go to www.academygportho.com



ADA CERP® Continuing Education Recognition Program

Academy of Gp Orthodontics is an ADA CERP Recognized Provider. ADA CERP is a service of the American Dental Association to assist dental professionals in identifying quality providers of continuing dental education. ADA CERP does not approve or endorse individual courses or instructors, nor does it imply acceptance of credit hours by boards of dentistry. Academy of Gp Orthodontics designates this activity for 145+ continuing education credits.



Approved PACE Program Provider FAGD/MAGD Credit
Approval does not imply acceptance by a state or provincial board of dentistry or AGD endorsement.
03/01/2010 to 02/28/2014